



# RAMPES AVANT-GARDE

À la hauteur  
de vos attentes

As High as Your  
Expectations

**CATALOGUE 2026**  
[rampesavantgarde.com](http://rampesavantgarde.com)



**À la hauteur  
De vos  
Attentes**

---

**Meeting  
Your  
Expectations**

# NOTRE HISTOIRE

## LES DÉBUTS

Rampes Avant-Garde a débuté comme fabricant de moules sous le nom de Formexpert.

En 2003, l'entreprise a élargi ses activités en produisant des planchers de balcon en fibre de verre, profitant de la croissance du marché immobilier local. Formexpert est rapidement devenue le leader dans ce secteur au Québec.

En 2006, l'entreprise a été rebaptisée Patios Fibrex et a commencé la fabrication de rampes en aluminium.

## AUJOURD'HUI

Forte de plus de 10 ans d'expérience, Rampes Avant-Garde est reconnue comme un chef de file dans la fabrication de rampes en aluminium, alliant durabilité et esthétique.

L'entreprise se distingue par sa capacité à offrir des solutions architecturales adaptées aux particularités de chaque projet, avec une capacité de production dépassant les 10 000 pieds linéaires par semaine et une présence grandissante en Ontario et au Québec.

Nous sommes convaincus que notre expertise et notre engagement envers la satisfaction de nos partenaires nous permettront de prospérer ensemble pendant de nombreuses années. Bienvenue chez Rampes Avant-Garde, là où l'innovation rencontre l'excellence.



# OUR HISTORY

## THE BEGINNINGS

Rampes Avant-Garde began as a mold manufacturer under the name Formexpert.

In 2003, the company expanded its activities by producing fiberglass balcony floors, capitalizing on the local real estate market growth. Formexpert quickly became the leader in this sector in Quebec.

In 2006, the company was renamed Patios Fibrex and started manufacturing aluminum railings.

## TODAY

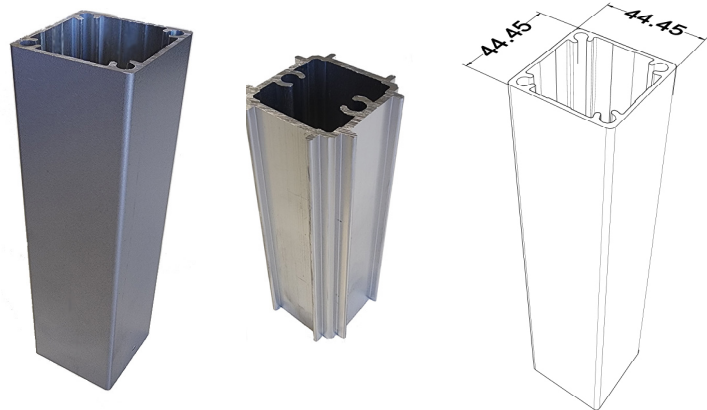
With over 10 years of experience, Rampes Avant-Garde is recognized as a leader in aluminum railing manufacturing, combining durability and aesthetics.

The company stands out for its ability to provide architectural solutions tailored to the specifics of each project, with a production # exceeding 10,000 linear feet per week and an increasing presence in Ontario and Quebec.

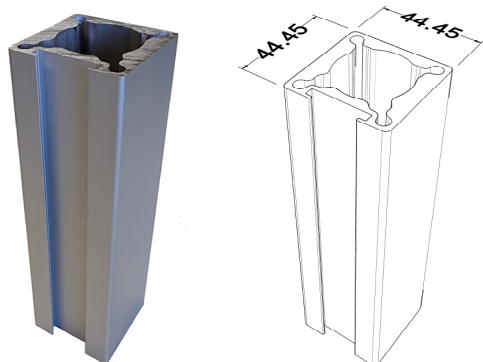
We are confident that our expertise and commitment to our partners's satisfaction will enable us to thrive together for many years to come. Welcome to Rampes Avant-Garde, where innovation meets excellence.



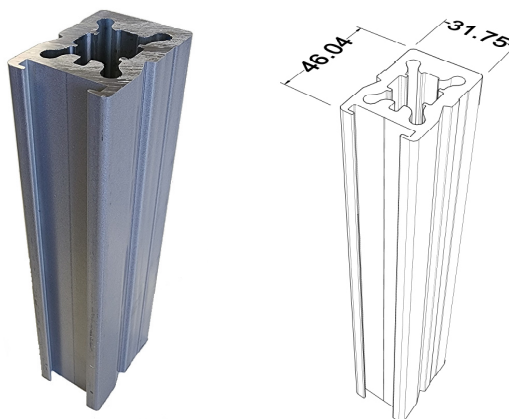




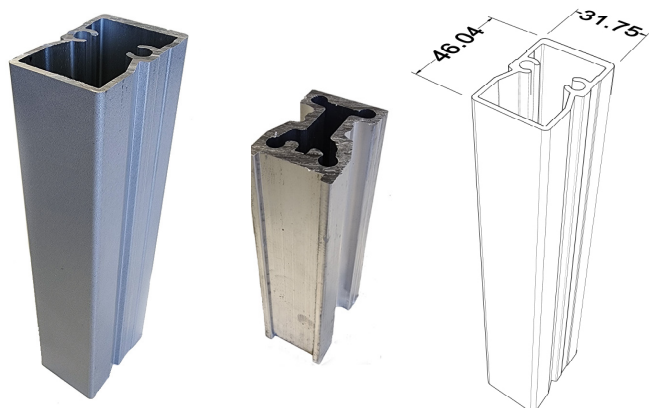
**1.0 Renfort**



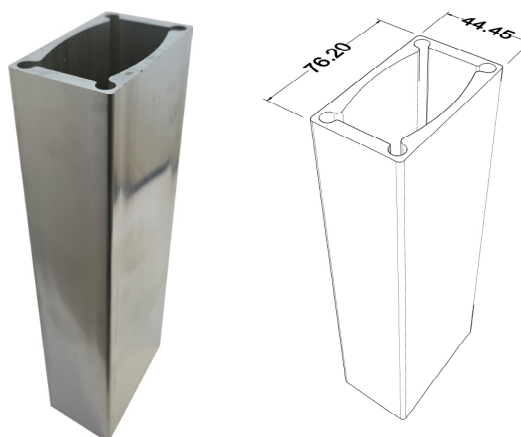
**2.0**



**3.0**



**4.0 Renfort**

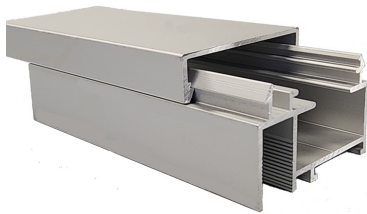
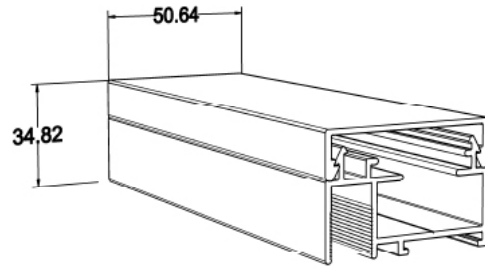


**5.0**

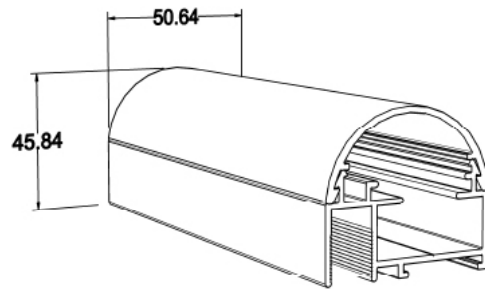
# Mains Courantes



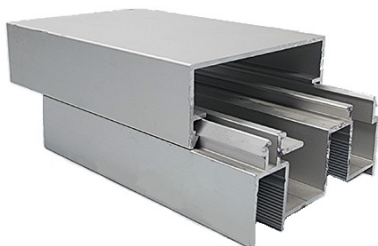
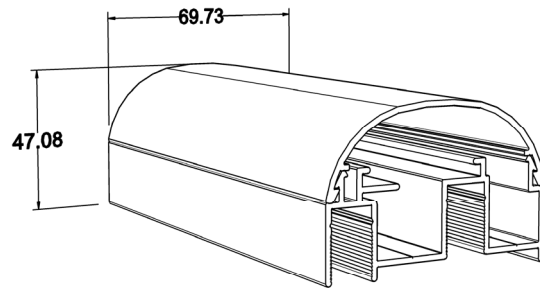
**SH**



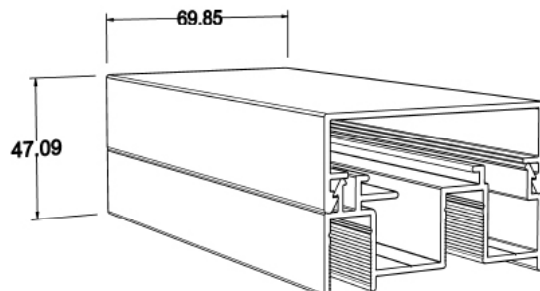
**SHC**

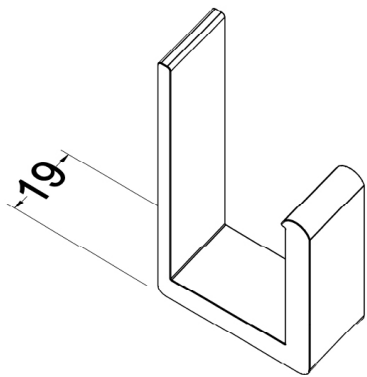


**IP 2.0**

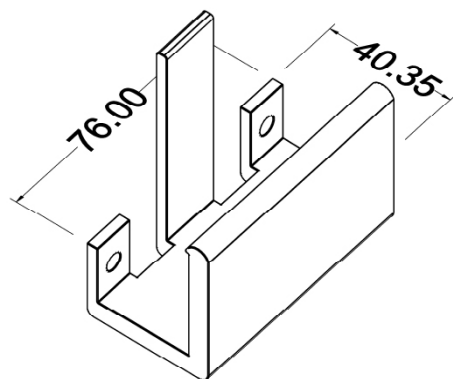


**AVG 2.0**

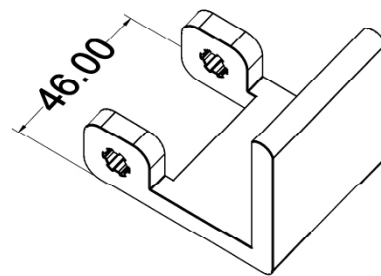




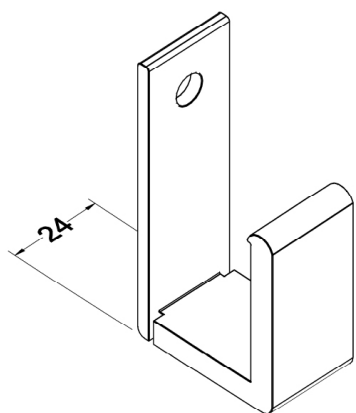
**Petit J 2.0**



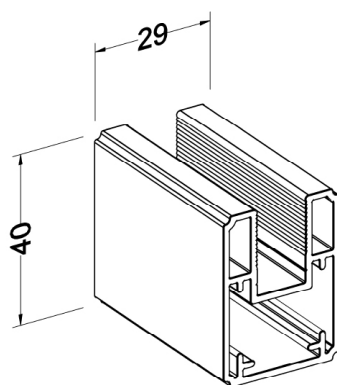
**Gros J 2.0**



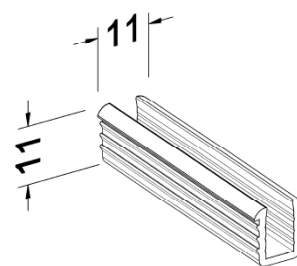
**Gros J 5.0**



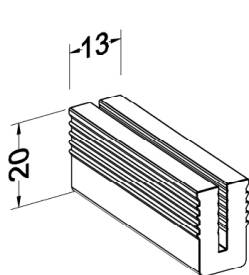
**Petit J 2.2**



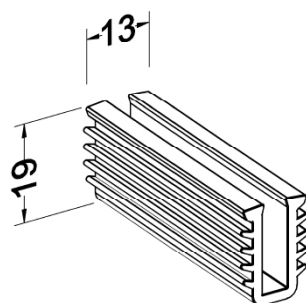
**Rail 2.0**



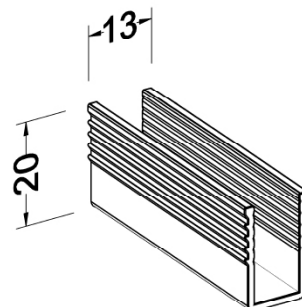
**Caoutchouc  
6 mm - 1.0**



**Caoutchouc  
3 mm**

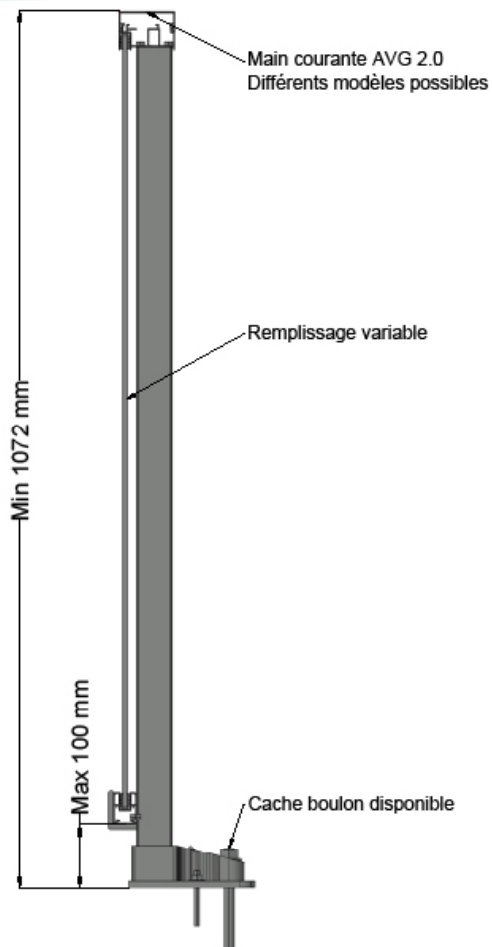
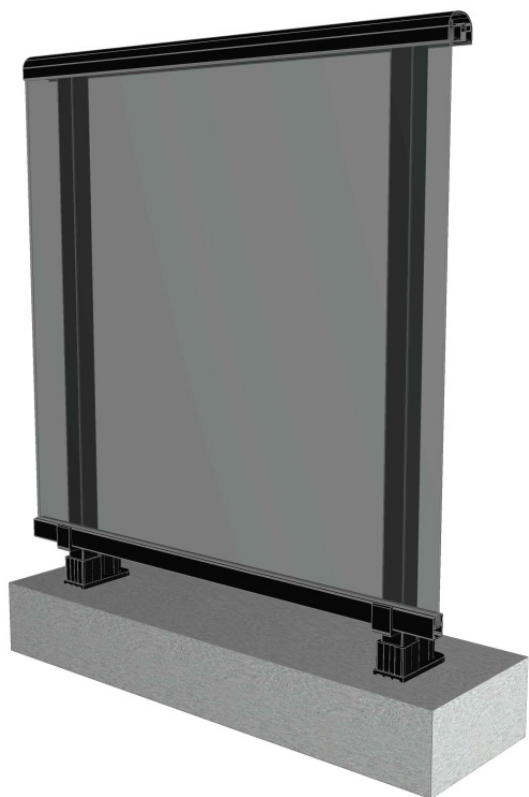


**Caoutchouc  
6 mm - 2.0**



**Caoutchouc  
10 mm**





## Composantes

### Mains courantes



IP 2.0



AVG 2.0



Base FX



Poteau 1.0

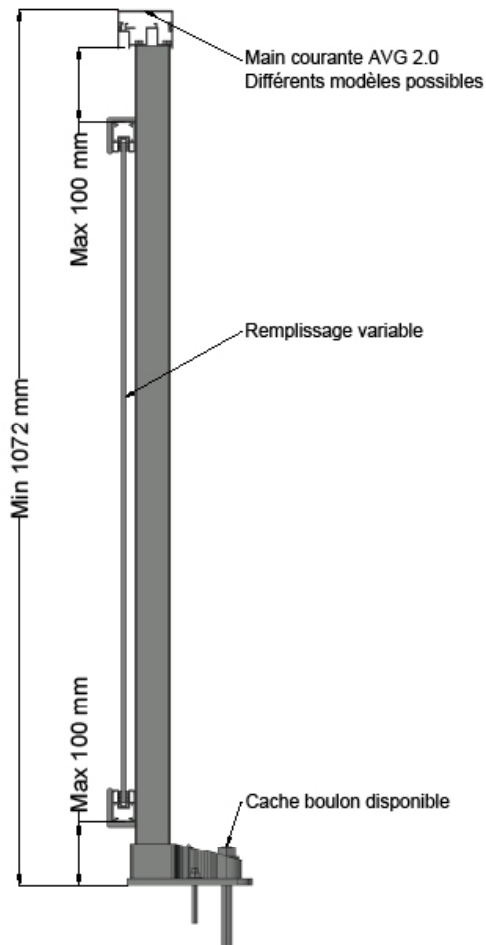
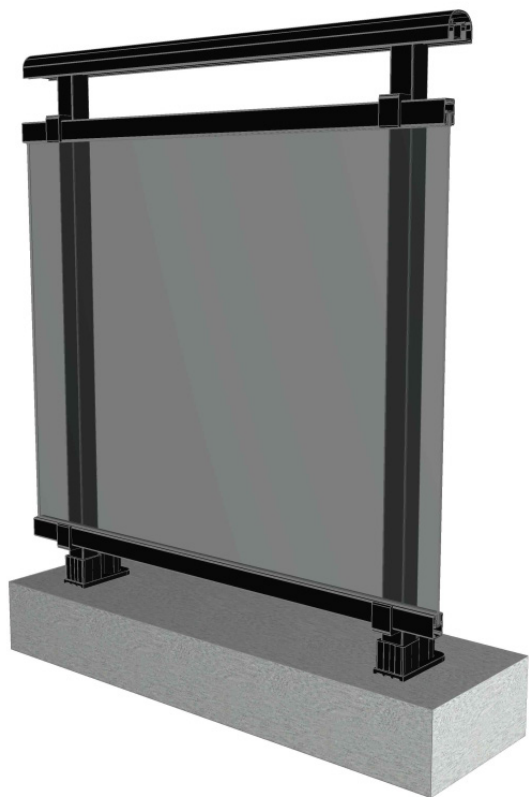


Renfort 1.0



Base AVG





## Composantes

### Mains courantes



IP 2.0



AVG 2.0



Base FX



Poteau 1.0

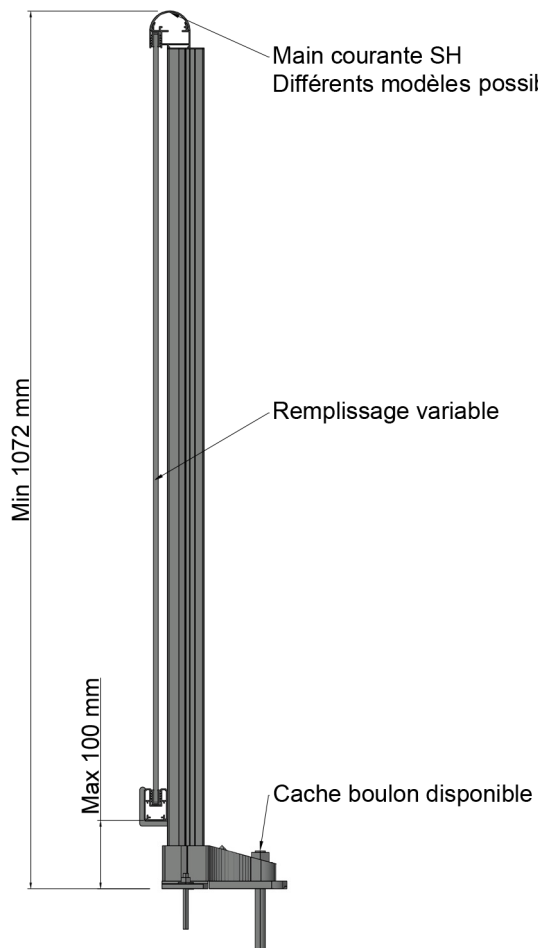


Renfort 1.0



Base AVG





## Composantes

### Mains courantes



IP 2.0



AVG 2.0



SH



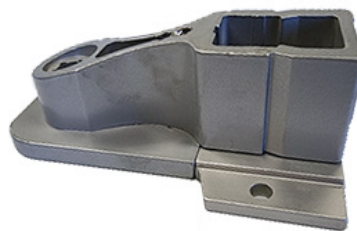
SHC



Poteau 4.0

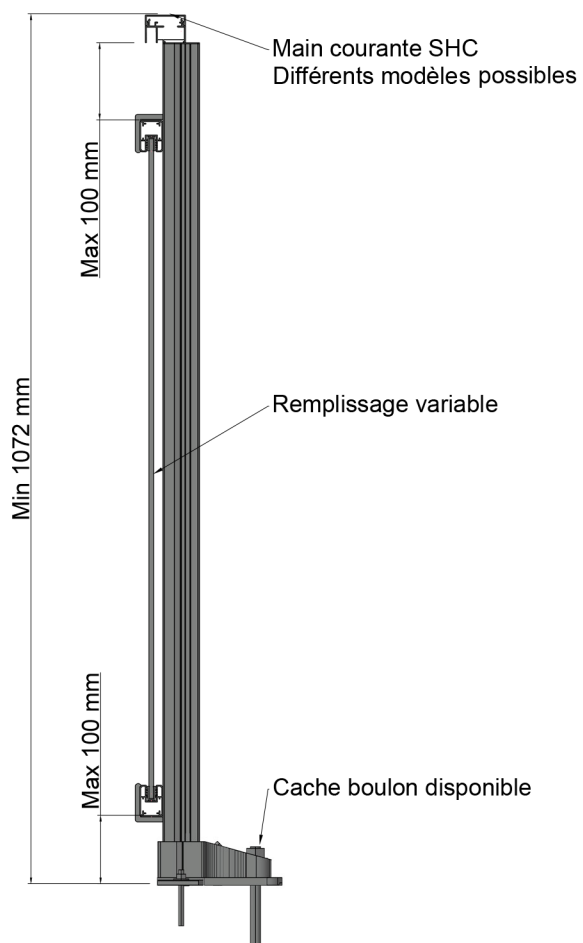
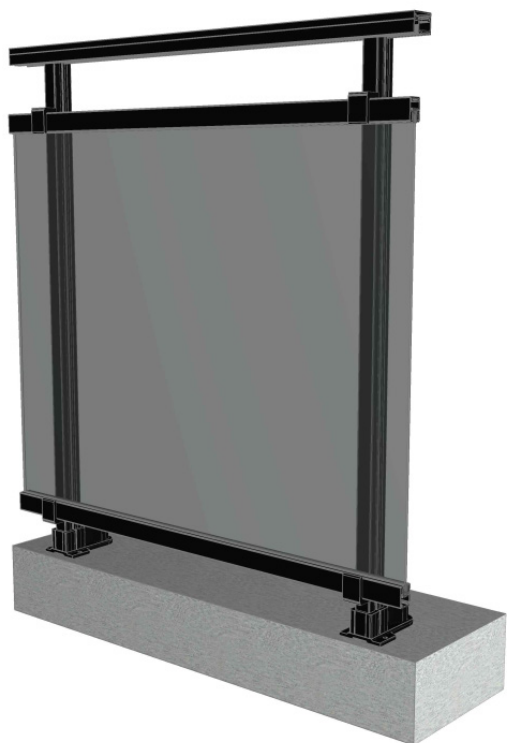


Renfort 4.0



Base SH





## Composantes

### Mains courantes



IP 2.0



AVG 2.0



SH



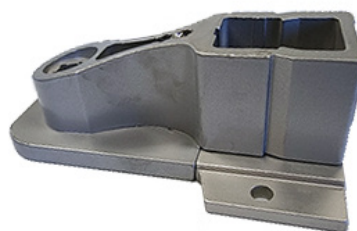
SHC



Poteau 4.0

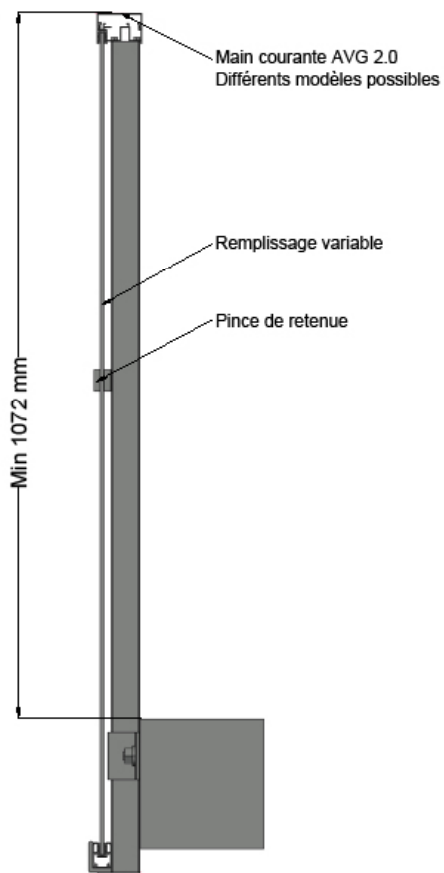
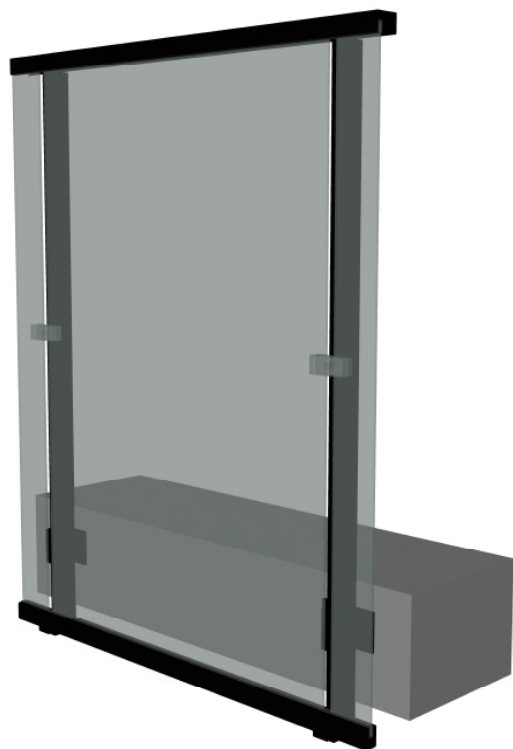


Renfort 4.0



Base SH





## Composantes

### Mains courantes



IP 2.0



AVG 2.0



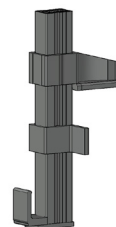
Attache Latérale 1.0



Poteau 1.0

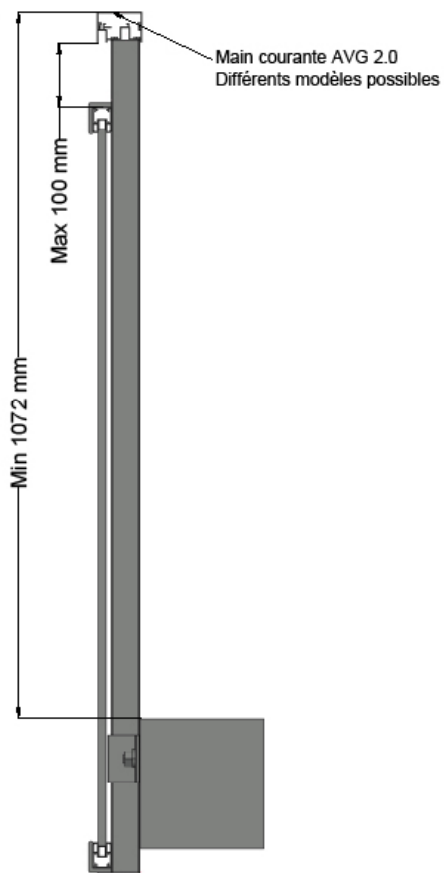
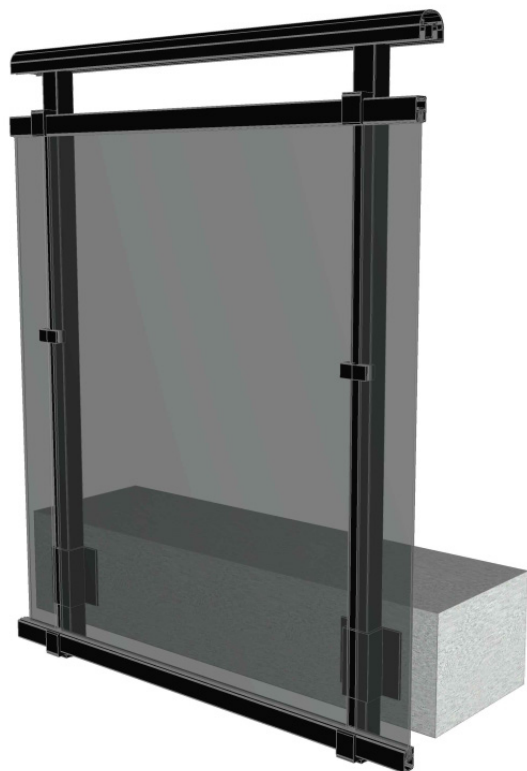


Renfort 1.0



Attache Latérale 1.0 & AVG





## Composantes

### Mains courantes



IP 2.0



AVG 2.0



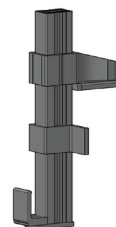
Attache Latérale 1.0



Poteau 1.0

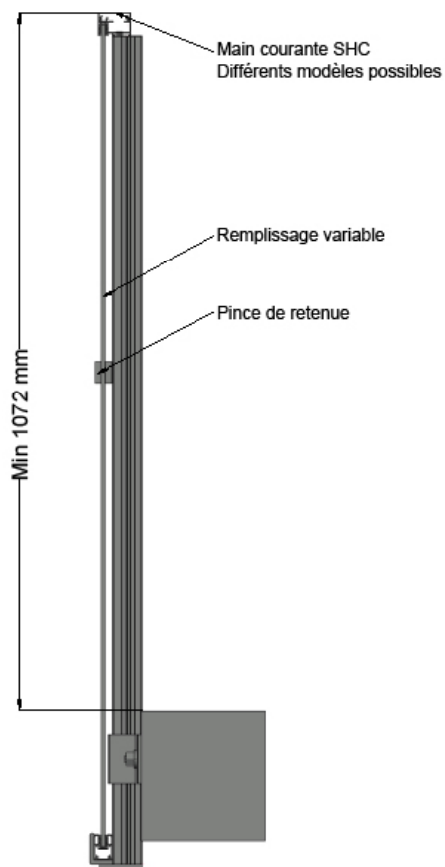
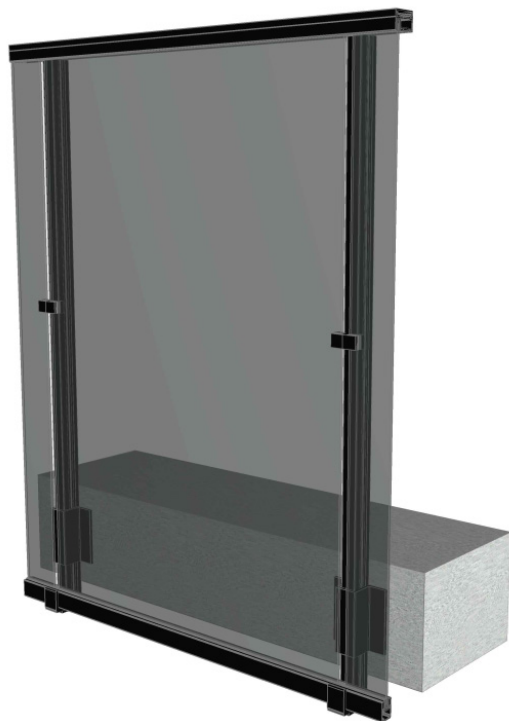


Renfort 1.0



Attache Latérale 1.0 & AVG





## Composantes

### Mains courantes



IP 2.0



AVG 2.0



SH



SHC



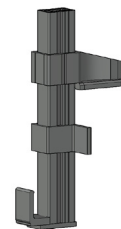
Poteau 4.0



Renfort 4.0



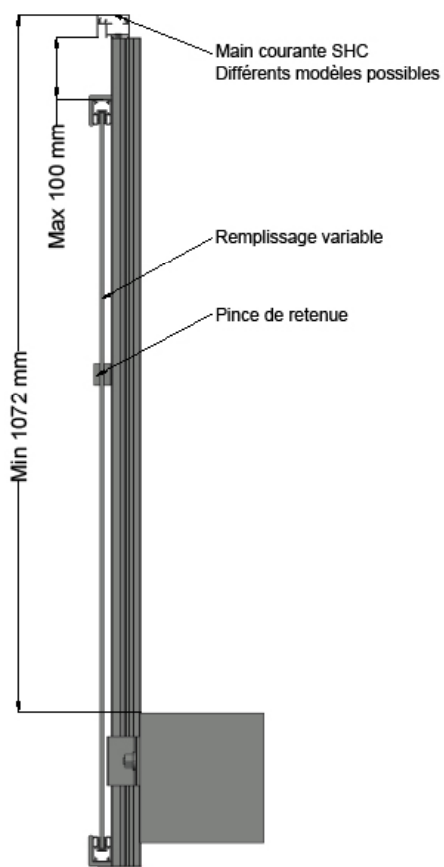
Attache Latérale 4.0



Attache Latérale 4.0 & SH



  
L'INITIAL



## Composantes

### Mains courantes



IP 2.0



AVG 2.0



SH



SHC



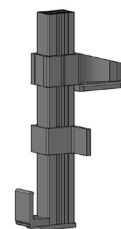
Poteau 4.0



Renfort 4.0

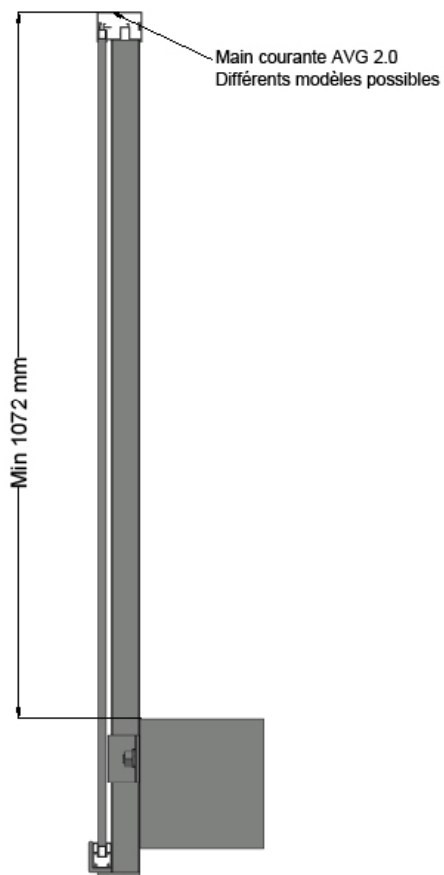
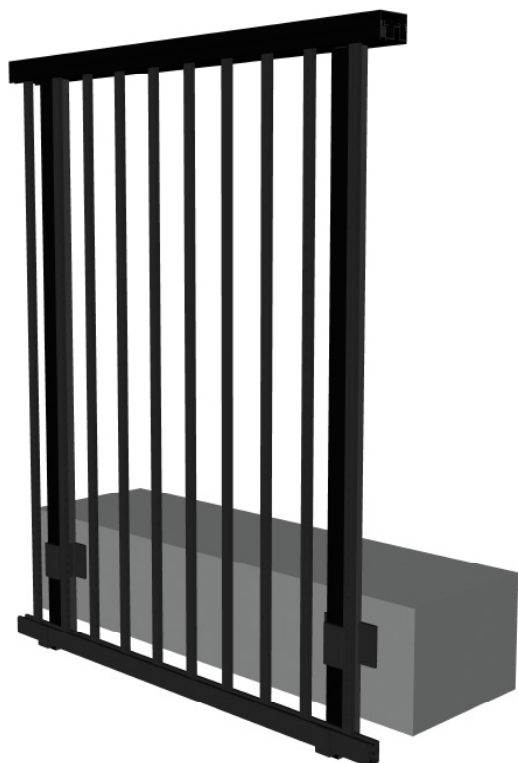


Attache  
Latérale 4.0



Attache Latérale  
4.0 & SH





## Composantes

### Mains courantes



IP 2.0



AVG 2.0



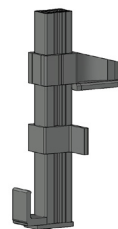
Attache Latérale 1.0



Poteau 1.0

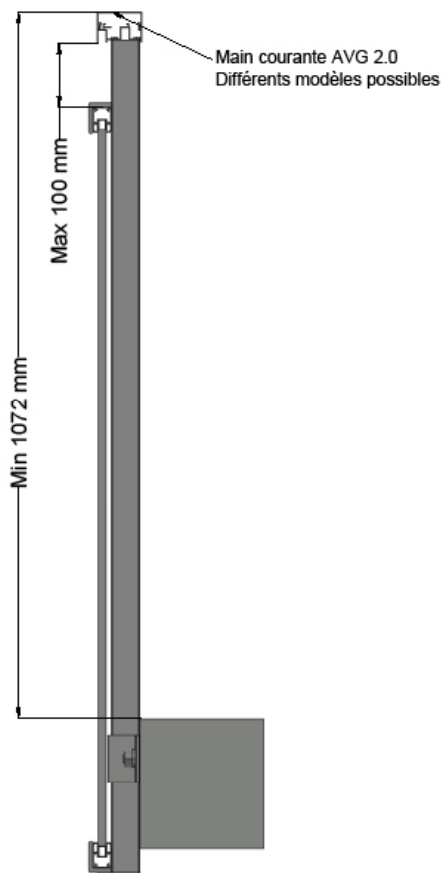


Renfort 1.0



Attache Latérale 1.0 & AVG





## Composantes

### Mains courantes



IP 2.0



AVG 2.0



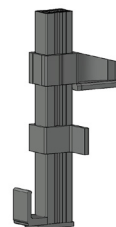
Attache Latérale 1.0



Poteau 1.0

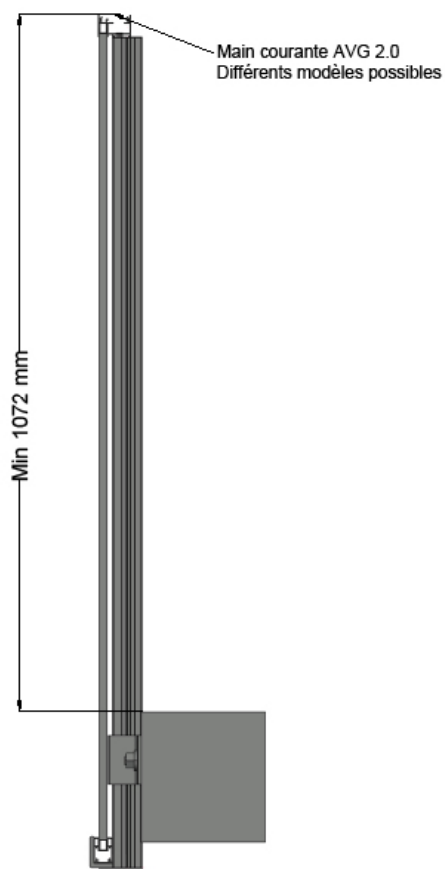
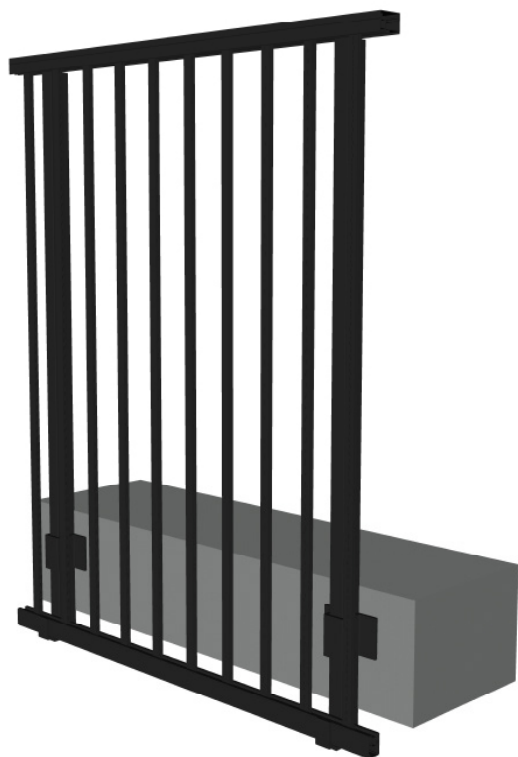


Renfort 1.0



Attache Latérale 1.0 & AVG





## Composantes

### Mains courantes



IP 2.0



AVG 2.0



SH



SHC



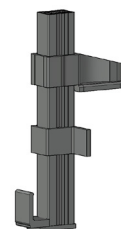
Poteau 4.0



Renfort 4.0

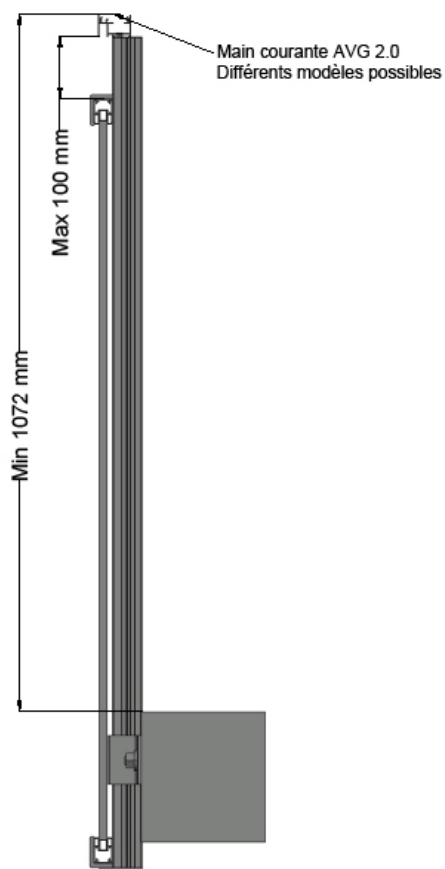


Attache  
Latérale 4.0



Attache Latérale  
4.0 & SH





## Composantes

### Mains courantes



IP 2.0



AVG 2.0



SH



SHC



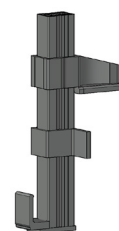
Poteau 4.0



Renfort 4.0

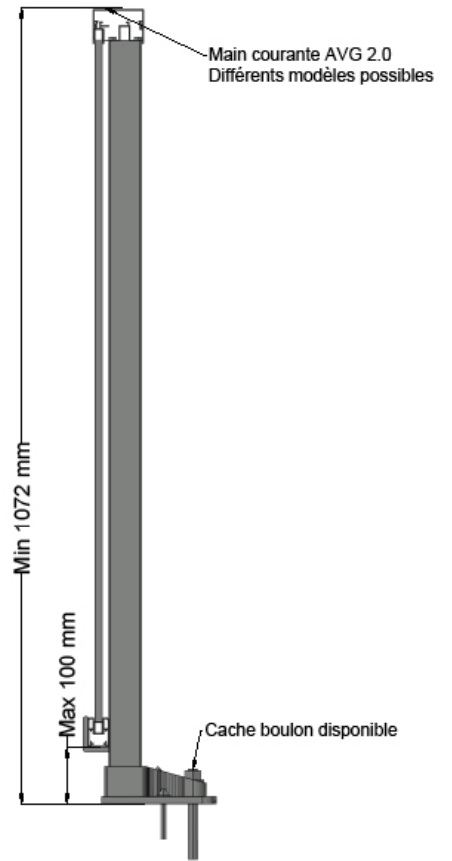


Attache Latérale 4.0



Attache Latérale 4.0 & SH

# Rampe Barrotin Façade 2.0



## Composantes

### Mains courantes



IP 2.0



AVG 2.0



Base FX



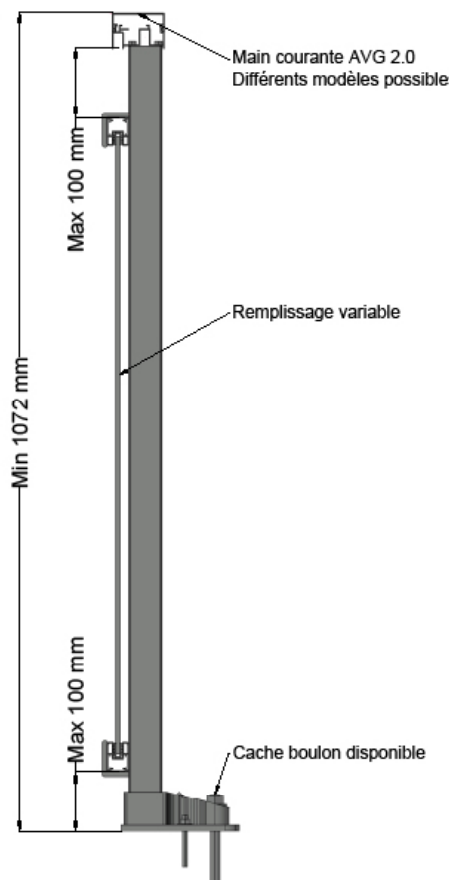
Poteau 1.0



Renfort 1.0



Base AVG



## Composantes

### Mains courantes



IP 2.0



AVG 2.0



Base FX



Poteau 1.0

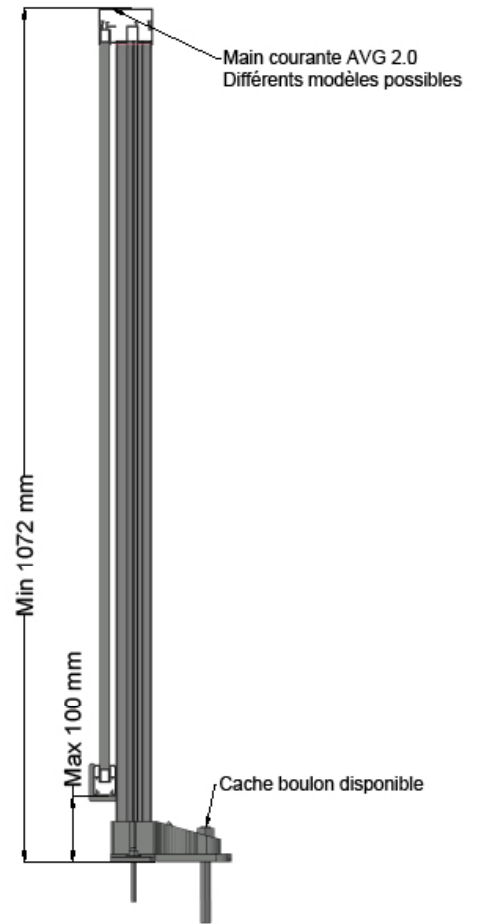
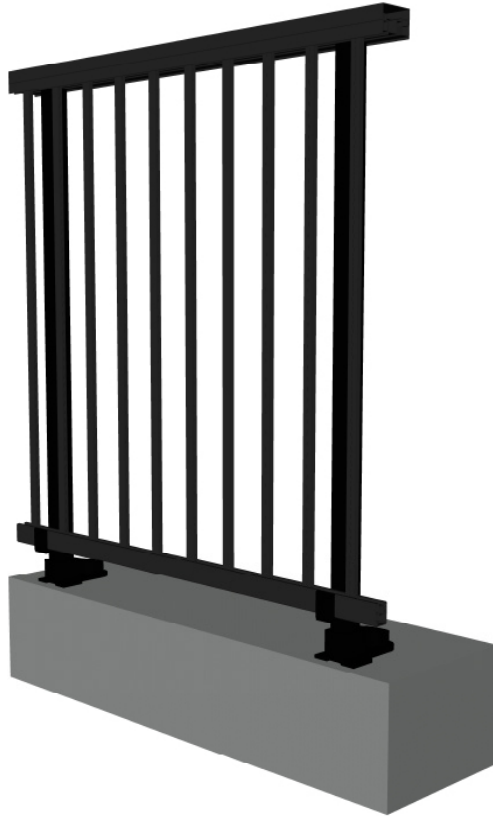


Renfort 1.0



Base AVG

# Rampe Barrotin Façade 3.0



## Composantes

### Mains courantes



IP 2.0



AVG 2.0



SH



SHC



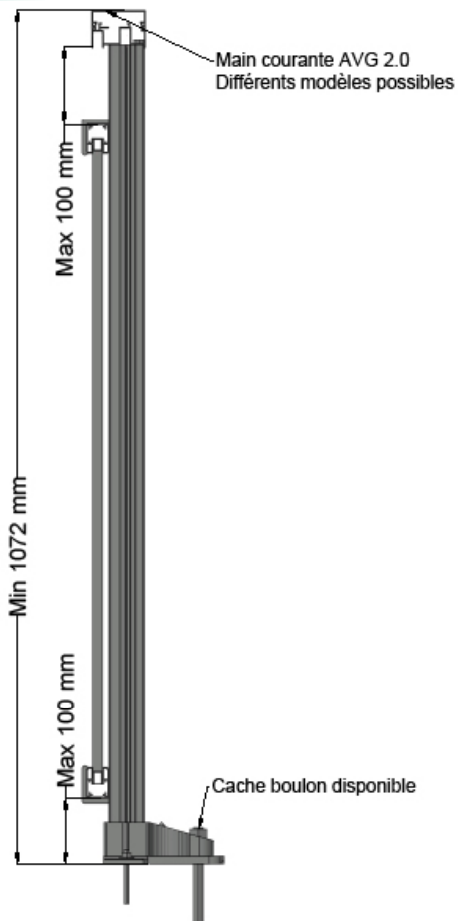
Poteau 4.0



Renfort 4.0



Base SH



## Composantes

### Mains courantes



IP 2.0



AVG 2.0



SH



SHC



Poteau 4.0

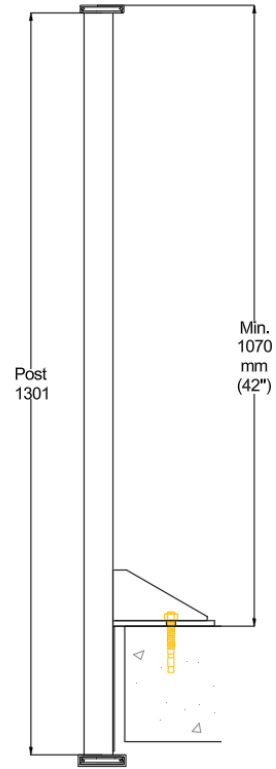
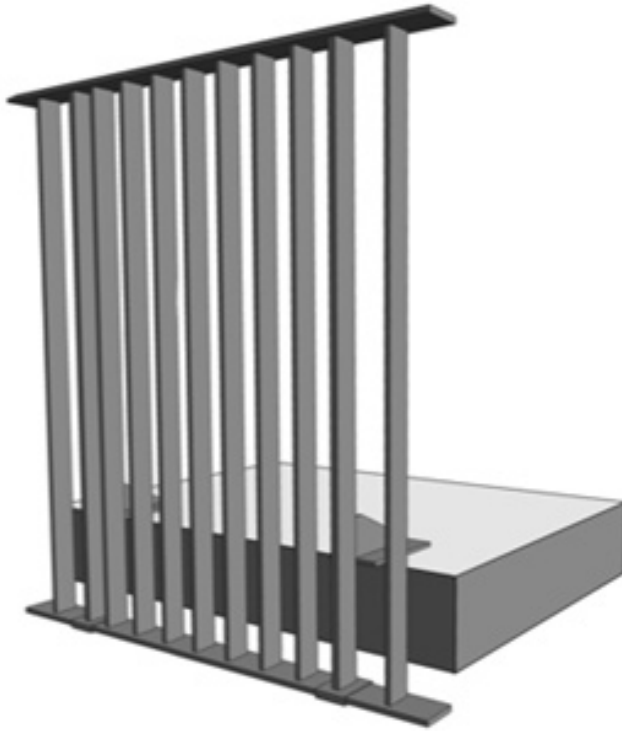


Renfort 4.0



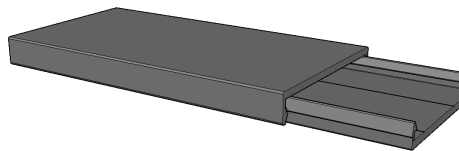
Base SH

# Rampe Barrotin Soudée Extérieure



## Composantes

### Mains courantes



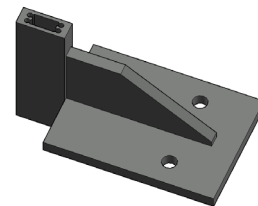
MC 3"



Poteau 2" x 3/4"



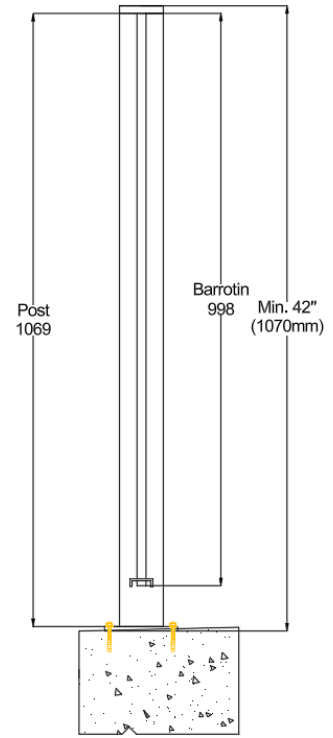
Barrotin 2" x 1/2"



Base SP

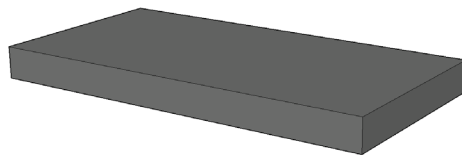


# Rampe Barrotin Soudée centrée

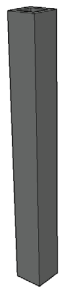


## Composantes

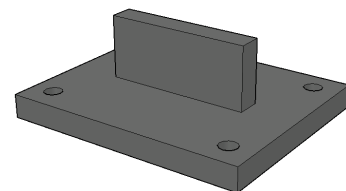
### Mains courantes



MC 3" x 1/2"



Barrotin 5/8" x 5/8"



Base Soudée



# Écran Diviseur

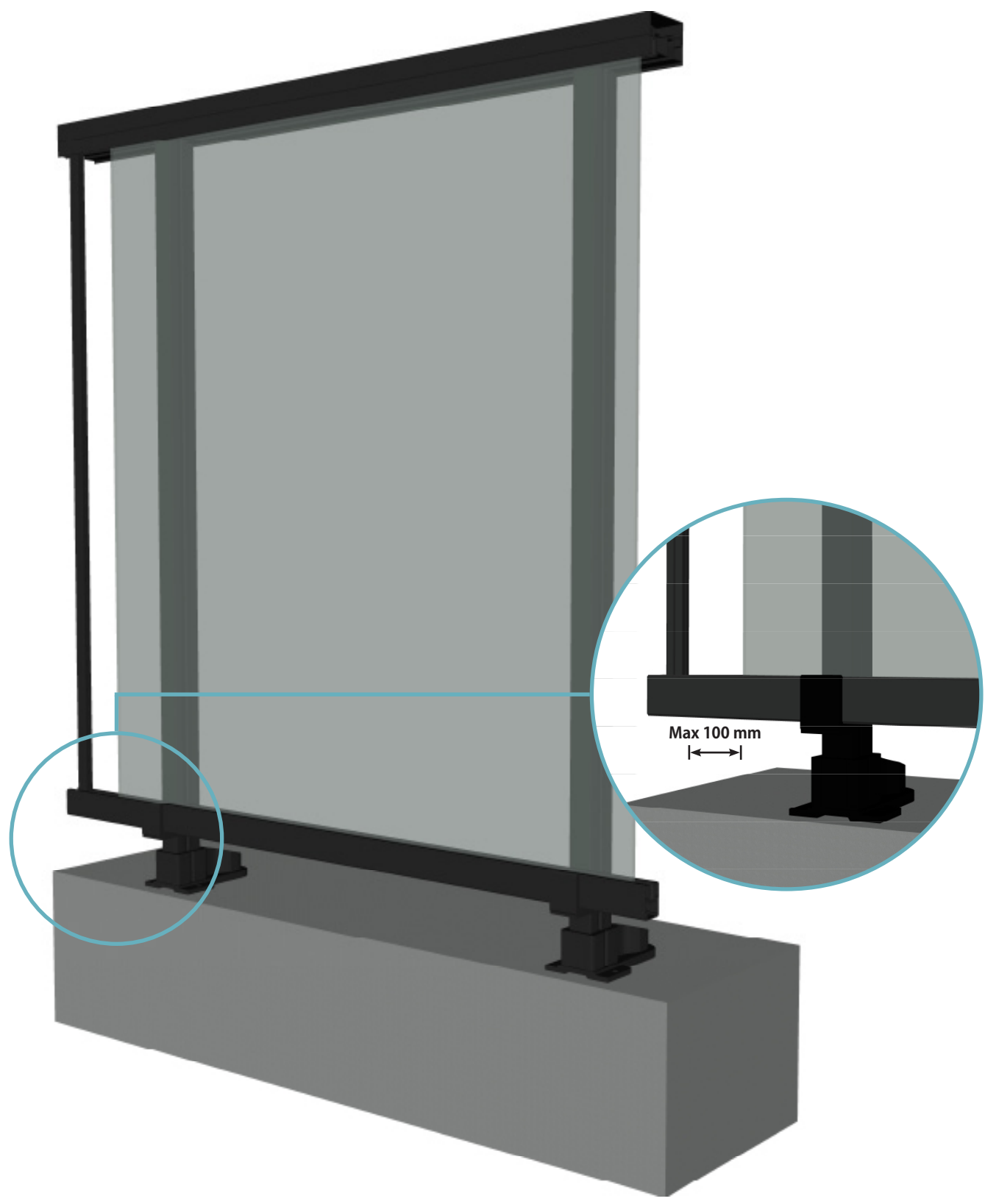


# Écran Visuel





# Barrotin de fin mural



## Fonction

Le barrotin de fin mural est installé à l'extrémité d'une rampe vitrée, près du mur, afin d'éliminer toute ouverture non conforme

---

## Conformité

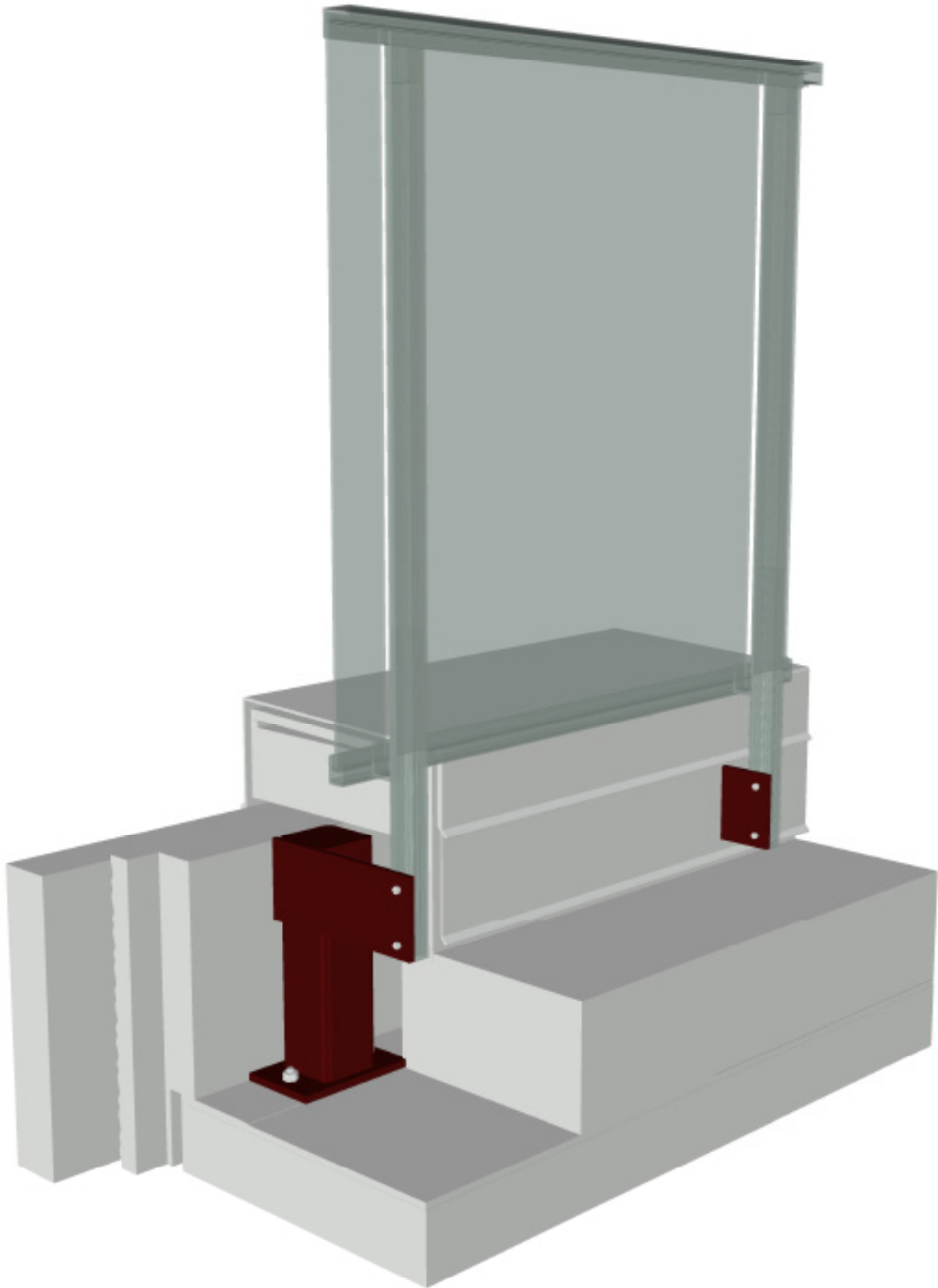
Conçu pour empêcher toute ouverture excédant 100 mm entre le mur et le vitrage, conformément aux exigences applicables.

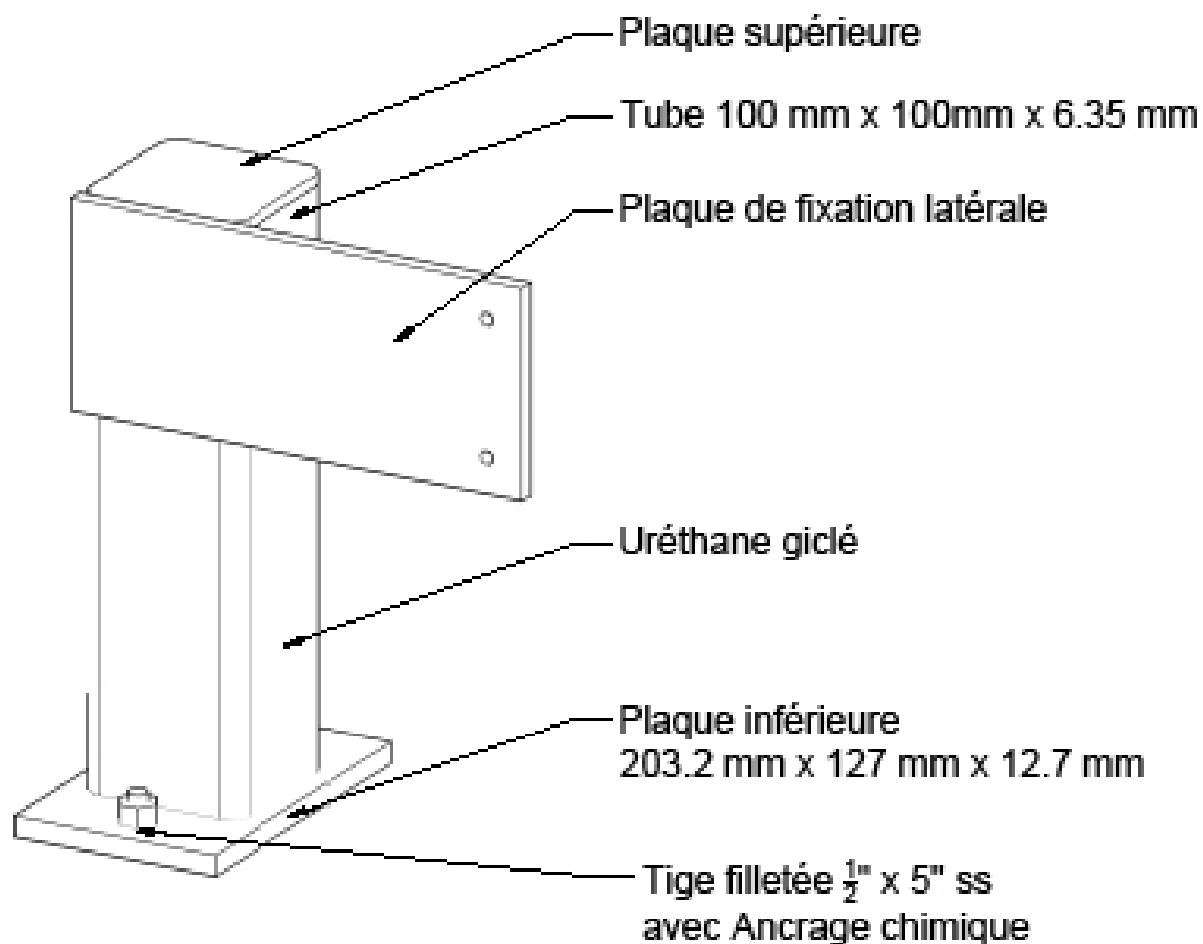
---

## Avantages

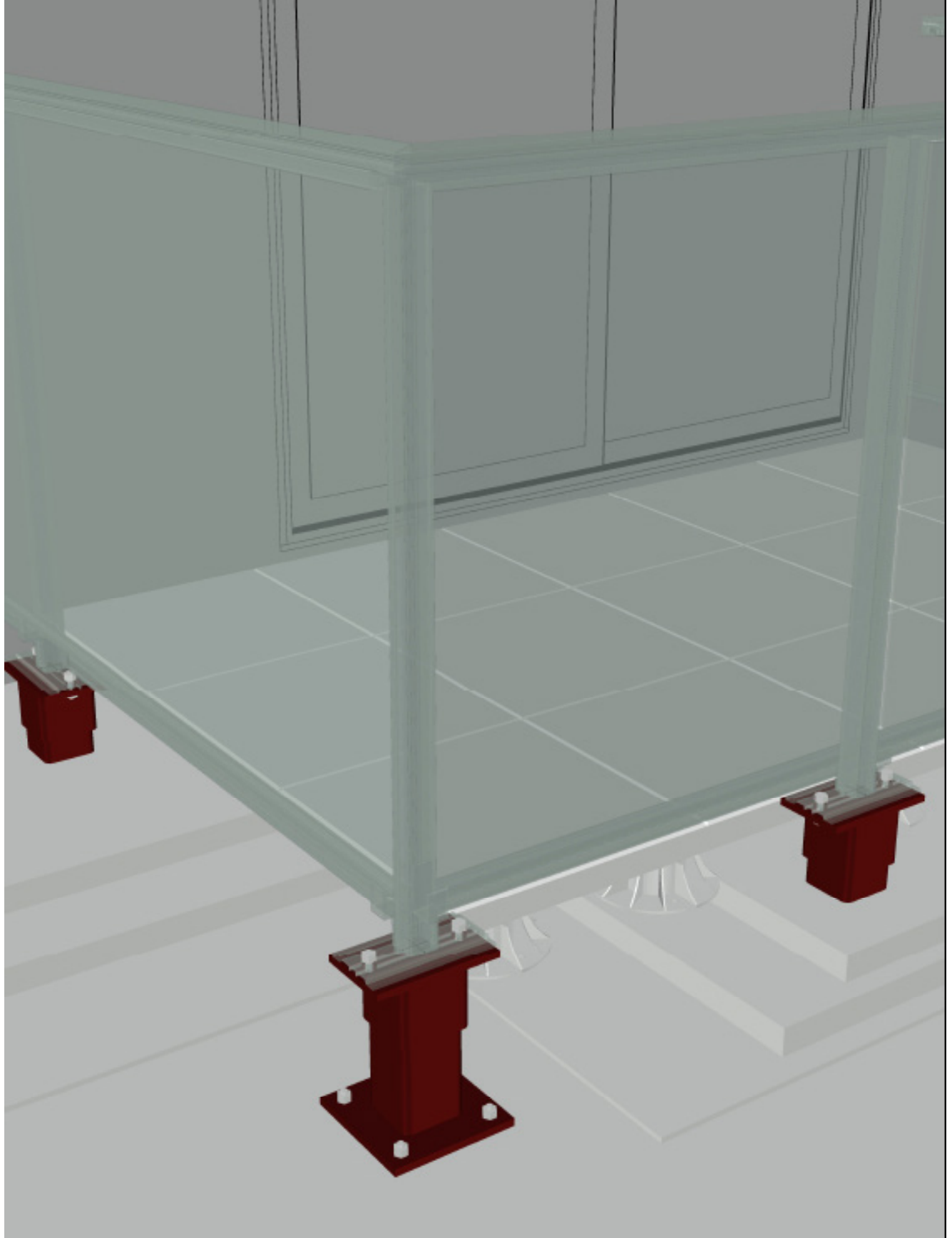
- Assure la conformité des garde-corps vitrés
- Intégration discrète au design de la rampe
- Compatible avec les systèmes de verre existants
- Installation simple en fin de parcours

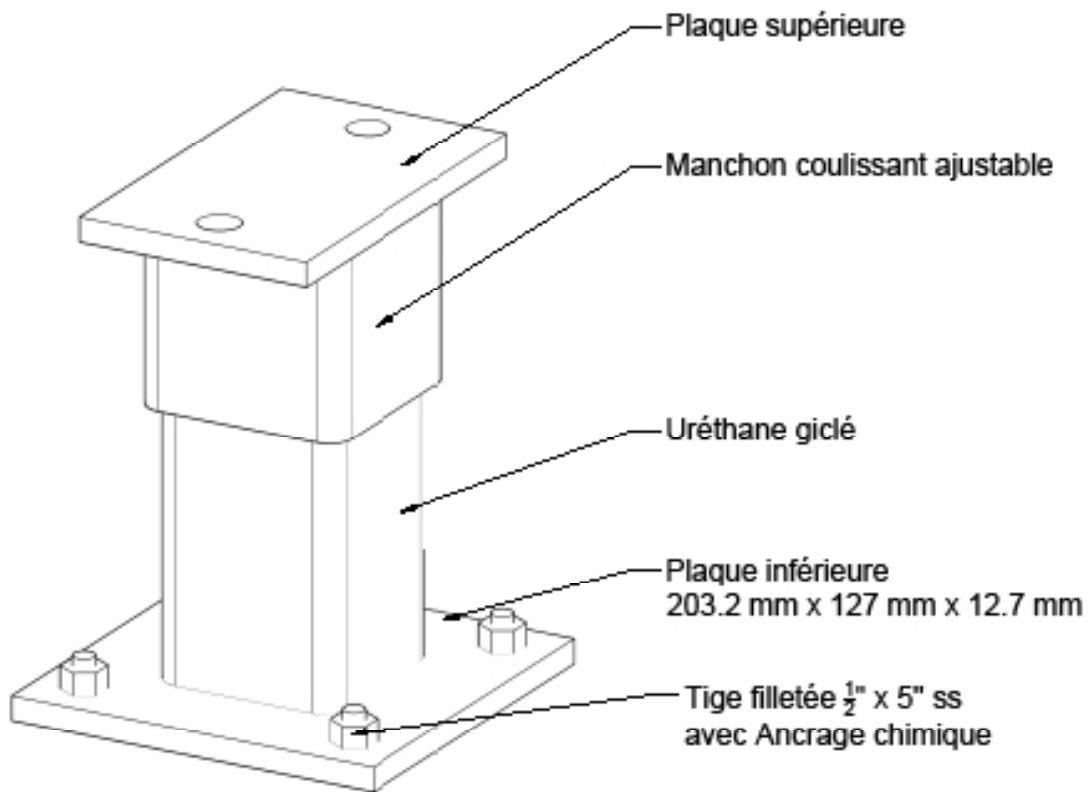
# Bossoir Parrapet





# Bossoir Terrasse





# Centre de coupe





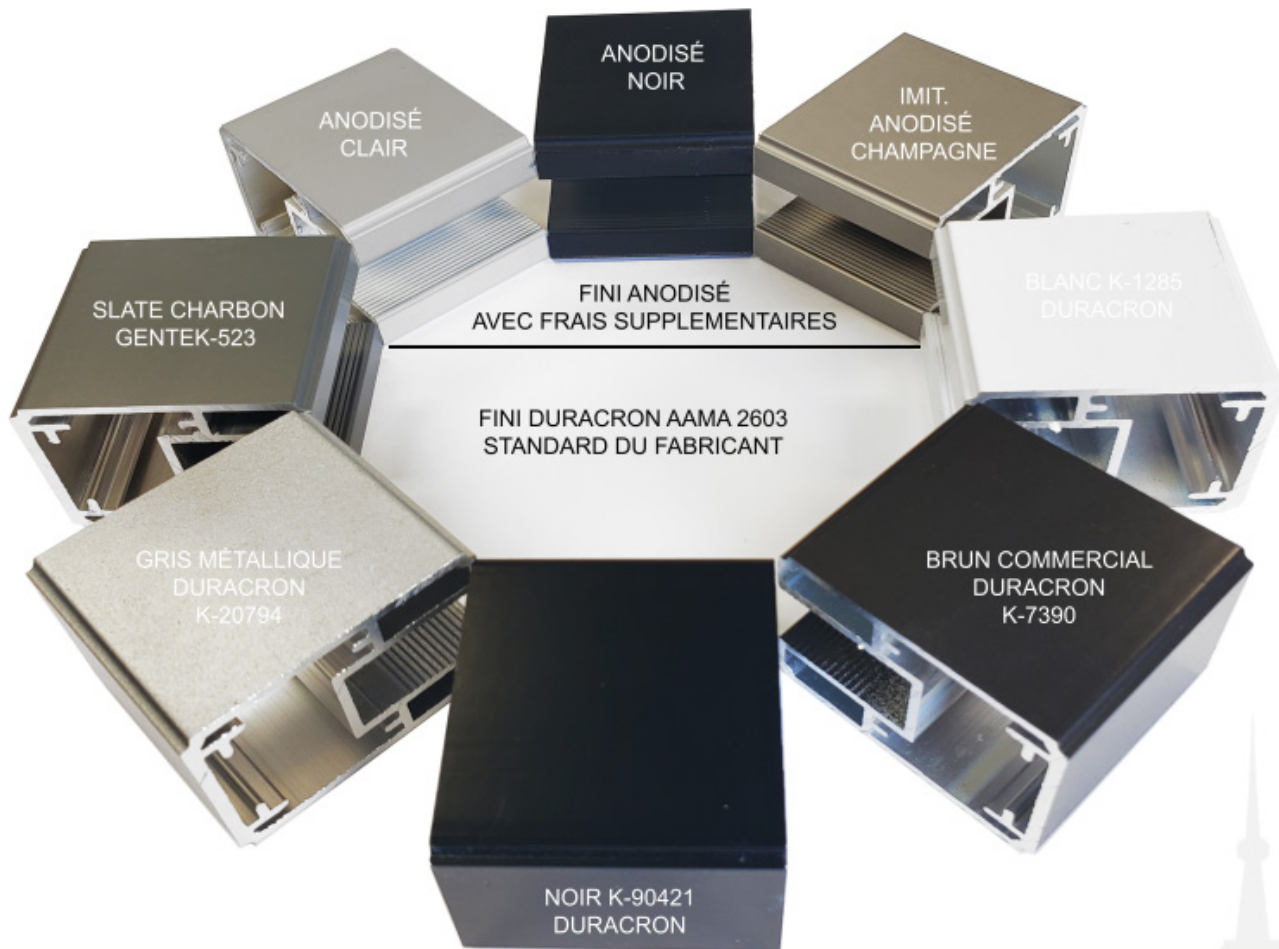
# Certification CWB



## Peinture en poudre



# Charte de couleur standard



**À la hauteur  
De vos  
Attentes**

---

**Meeting  
Your  
Expectations**



445 Rue Nolin, Québec  
1 418 529-8871

[rampesavantgarde.com](http://rampesavantgarde.com)

À la hauteur  
de vos attentes

As High as Your  
Expectations

**CATALOGUE 2026**  
[rampesavantgarde.com](http://rampesavantgarde.com)